





Invest in a vacation rental with confidence.

The intel below uses a combination of vacation rental performance statistics and broader market trends to reveal how properties in this area performed on average in the last 12 months. It's the must-know historical data you need to help make smart buying decisions.*



How has home size affected performance?

			
NUMBER OF BEDROOMS	AVERAGE NIGHTS BOOKED	AMOUNT OF YEAR BOOKED	LOCAL INVENTORY BREAKDOWN
1	131	36%	31%
2	130	36%	34%
3	131	36%	17%
4	124	34%	7%
5	153	42%	3%

TOP EVOLVE PERFORMER







1 BEDROOM



279 NIGHTS BOOKED

How much revenue have owners earned?

			
NUMBER OF BEDROOMS	AVERAGE DAILY RATE	AVERAGE YEARLY REVENUE TOP 50%	AVERAGE YEARLY REVENUE TOP 75%
1	\$152	\$24,490	\$34,851
2	\$190	\$32,684	\$51,759
3	\$292	\$47,704	\$70,853
4	\$450	\$69,505	\$100,095
5	\$649	\$125,318	\$162,500

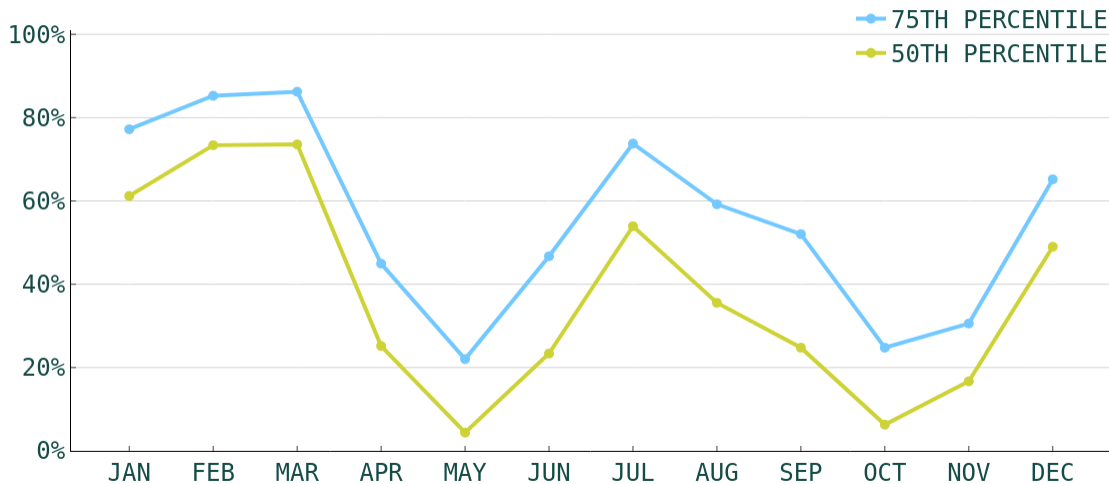
TOP EVOLVE PERFORMER



5 BEDROOMS


\$1305
AVERAGE
DAILY RATE

What has annual occupancy looked like?



Jan, Feb, Mar
HIGH SEASON



May, Oct, Nov
LOW SEASON



AVERAGE DAYS
BOOKED IN ADVANCE

40

55

HIGH SEASON LOW SEASON



AVERAGE LENGTH
OF STAY IN DAYS

3

3

HIGH SEASON LOW SEASON



AVERAGE
DAILY RATE

\$293

\$199

HIGH SEASON LOW SEASON

Make vacation rental investment easy.

Whether you're looking for that first vacation home or your next dream property, we have the resources and expertise to help.



More Market Analyses



Real Estate Experts



Homes for Sale



Get-Started Resources

*This analysis is not a guarantee or offer of performance by Evolve. It is intended to show only the range of average outcomes seen in the market last year, is not exclusively based on actual Evolve customer accounts, and does not reflect the effect of future changes in economic and market factors. This analysis includes data for Summit County Area from 03/01/23 - 03/01/24.

